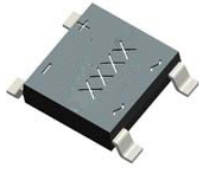


TB14F THRU TB120F



ABF

FEATURES

- Reverse Voltage - 40 to 200V
- Forward Current - 1 A
- High Surge Current Capability
- Designed for Surface Mount Application

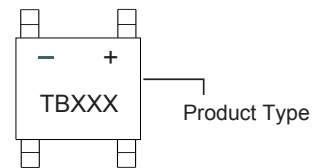
PRIMARY CHARACTERISTICS

I _{F(AV)}	1.0 A
V _{RRM}	40 V THRU 200 V
I _{FSM}	40A, 30A
I _R	0.5 mA, 0.3mA
V _F	0.55V, 0.7V, 0.85V, 0.95V
T _{J max.}	125 °C

MECHANICAL DATA

- Case: ABF molded plastic body
- Polarity: Symbol molded on body
- Mounting Position: Any

Part Marking System



MAXIMUM RATINGS AND ELECTRICAL CHARACTERISTICS

Ratings at 25 C ambient temperature unless otherwise specified.
Single phase half-wave 60Hz, resistive or inductive load, for capacitive load current derate by 20%.

CHARACTERISTICS	SYMBOL	TB14F	TB16F	TB18F	TB110F	TB120F	UNIT
Maximum Recurrent Peak Reverse Voltage	VRRM	40	60	80	100	200	V
Maximum RMS Voltage	VRMS	28	42	56	70	140	V
Maximum DC Blocking Voltage	VDC	40	60	80	100	200	V
Maximum Average Forward Rectified Current @T _A =40 °C	I(AV)	1.0					A
Peak Forward Surge Current 8.3ms Single Half Sine-Wave Super Imposed on Rated Load(JEDEC Method)	IFSM	40		30			A
Peak Forward Voltage at 1.0A DC	VF	0.55	0.7	0.85		0.95	V
Maximum DC Reverse Current at Rated DC Blocking Voltage @T _J =25°C @T _J =100°C	IR	0.3 10		0.2 5	0.1 2		mA
Operating Temperature Range	TJ	-55 to +125					°C
Storage Temperature Range	TSTG	-55 to +150					°C

- Note: 1. Measured at 1MHz and applied reverse voltage of 4 V D.C.
2. Mounted on glass epoxy PC board with 4×1.5"×1.5" (3.81×3.81 cm) copper pad.

TVS
Rectifiers
SKY
Zener
Switching
DIAC
Bridge

Ratings and Characteristic Curves ($T_A=25^\circ\text{C}$ unless otherwise noted)

FIG. 1- Average Rectified Output Current Derating Curve

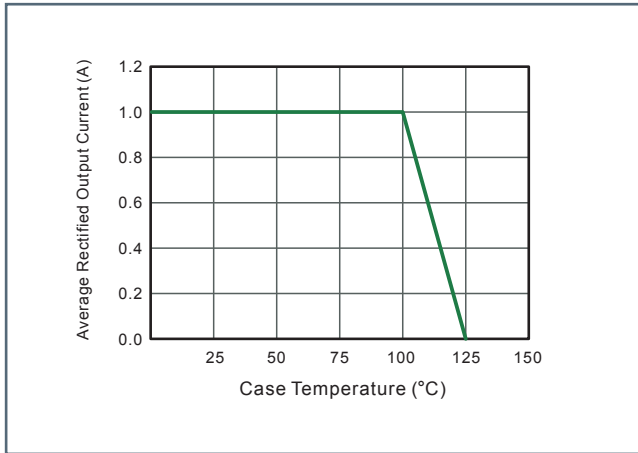


FIG. 2- Maximum Non-Repetitive Peak Forward Surge Current

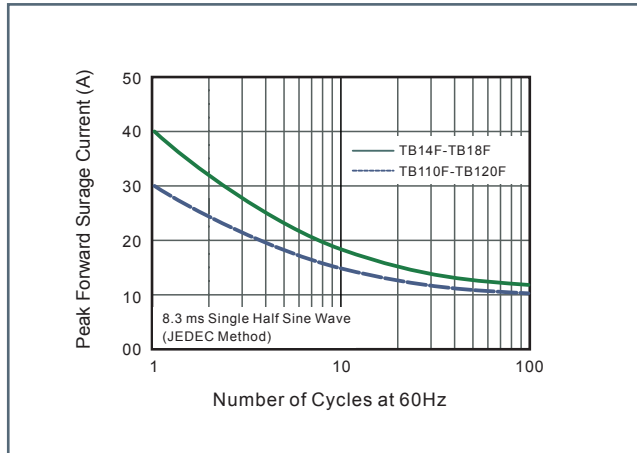


FIG. 3- Typical Reverse Characteristics

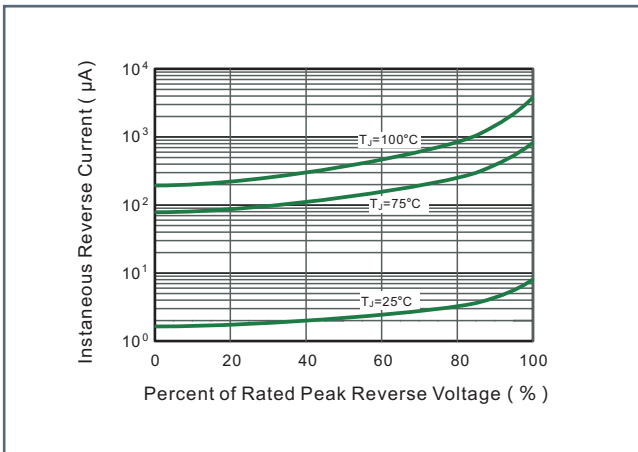
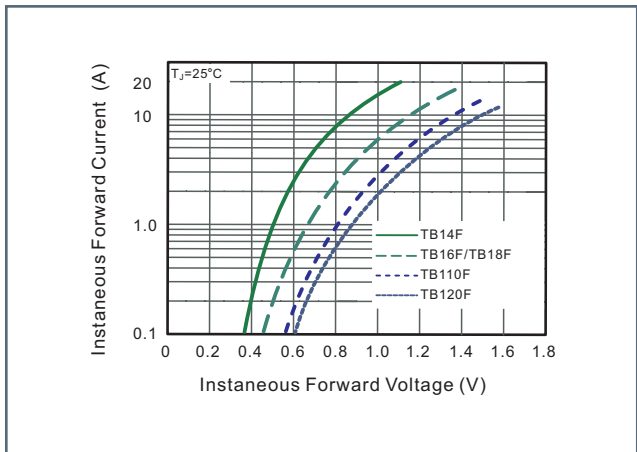
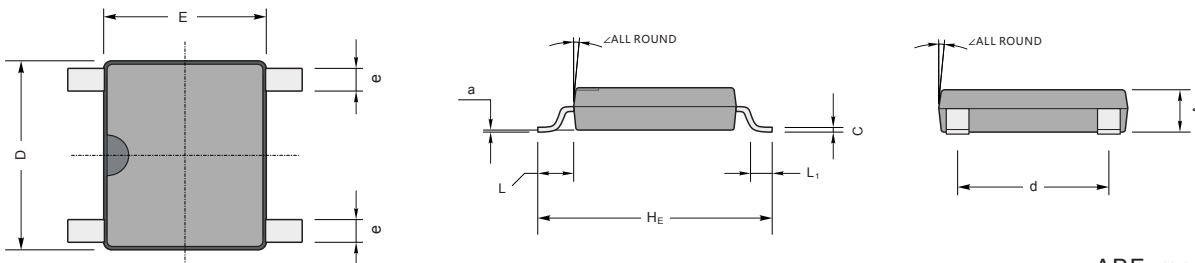


FIG. 4- Typical Forward Characteristic



Dimensions

ABF



ABF mechanical data

UNIT		A	C	D	E	H_E	d	e	L	L_1	a	\angle
mm	max	1.2	0.22	5.2	4.5	6.4	4.2	0.7	0.95	0.6	0.2	7°
	min	1.0	0.15	4.9	4.2	6.0	3.8	0.5				
mil	max	47	8.7	205	177	252	165	28	37	24	8	
	min	39	5.9	193	166	236	150	20				